

Enabling Cephable on Windows

1

What is Cephable?

Cephable is a software application you install on your computer so that you can expand your functionality beyond standard keyboard/mouse controls. You can use voice controls, independent face recognition, virtualification, motion controls and more.

2

Steps to Download & Install

Click the Windows Download on the Cephable website.

If the file doesn't download automatically, click "Start Your Download Now".

Control your technology on your terms

Download the Cephable application now.



3

Click the Explorer



4

Click your "Downloads" folder



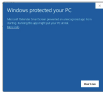
5

Click on the Cephable Setup File



6

In some cases, based on your firewall setup, you may see the "Microsoft Defender SmartScreen" telling you this is an unrecognized app. This is because this is a new app that doesn't have a company name listed and because that it's signed and published by "Cephable, Inc." - our company name before Cephable.



7

When you see this notification about risks, but you don't think anything is wrong, click what it thinks.



8

Next, Cephable will open automatically. Welcome to Cephable!



9

For quick access to Cephable, you can also "pin to taskbar"



10

Getting Started

Now that you have downloaded, installed, and opened Cephable, you can make your account and start managing your new inputs.

Check out our other content for more information or customizing your preferences and using your accessories.

